

SPDC Summer 2023



Key for wheelchair users

- Fully wheelchair accessible
- Call to discuss accessibility
- Inaccessible for wheelchairs

Important information before booking!

It's nearly the summer holidays, so, to help you all make the most of them SPDC have a whole range of activities on offer.

Before we get to the details of the activities, we would ask you to read the following information carefully so that we can ensure that we are able to offer opportunities to all those who want to take part.

Who can access SPDC activities?

Families who care for a disabled child, who live in the Borough of Sandwell and are registered with SPDC.

Any questions contact
Diane Duckers
Activities Coordinator
07594 486930

Gary Warrington
Activities Coordinator
07763 593877

Help us to offer services to as many families as possible.

Our activities are very popular and are usually oversubscribed, so upon booking please list you activities you are interested in attending in order of preference.

We do operate waiting lists. Therefore, if we offer you a place(s) on an activity, it is really important that you let us know if you are unable to attend, by not doing so you may be preventing another child or family attending that activity.

Children aged 4 to 11 years & Children aged 11 to 18 years

Activities offered under these heading are primarily for the disabled child. That said, you can request a sibling place at the time of booking and we will do our best to accommodate such requests but unfortunately we are unable to prioritise bookings for siblings over disabled children.

Although parent carers are required to stay on the premises for the duration of these activities, short breaks from your caring responsibilities are offered in the form of a chance to meet other parent carers, to enjoy a drink and a snack or to simply sit quietly whilst your child takes part in the session.

Family Activities

Activities offered under this heading are aimed at all members of the family including siblings and parent carers. As well as children, parent carers may take part in an activity under this heading, or may choose to watch their children take part.

The booking process

Email your booking to to

spdcbooking@sp-dc.org

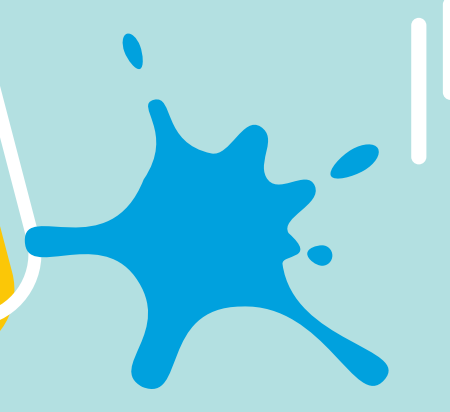
remembering to include the date you are interested in if there is more than one session

You will receive an email confirming the places you have been allocated.

To enable us to process your booking efficiently, we will not accept bookings after 9am on Tuesday 4th July.

4-11 years Activities

DISABLED CHILD ONLY



HORSE RIDING & GROOMING

SANDWELL VALLEY RIDING CENTRE,
WIGMORE FARM, WIGMORE LANE, WEST
BROMWICH, B71 3SU

THURSDAY 27TH JULY

TUESDAY 22ND AUGUST

WEDNESDAY 30TH AUGUST

THURSDAY 31ST AUGUST

ALL SESSIONS TAKE PLACE 10AM-12PM

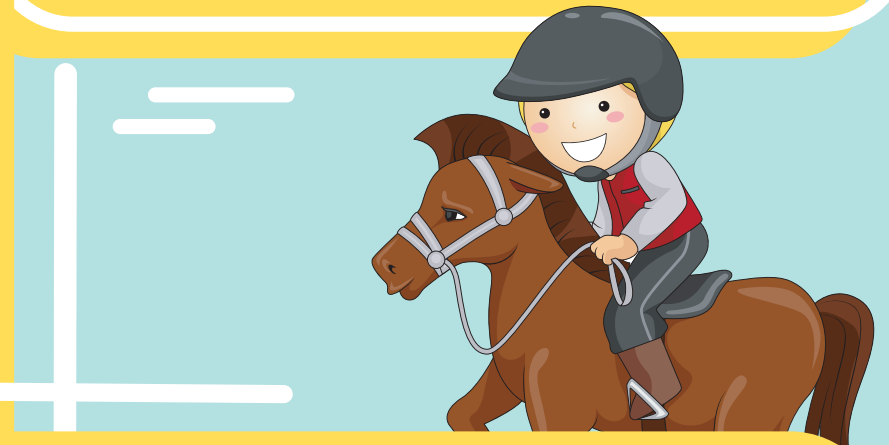


ENJOY SPENDING TIME WITH THE STUNNING HORSES
AT THE FARM, HAVE FUN TREKKING AND GET A TASTE
OF HOW TO CARE FOR THESE LOVELY ANIMALS.

ART ATTACK



GALTON VALLEY CHILDRENS CENTRE,
GREAT ARTHUR STREET, SMETHWICK,
B66 1DH
WEDNESDAY 26TH JULY
1-3.00PM
JOIN THE TEAM TO CREATE A MASTERPIECE
OR TO JUST GET STUCK IN!



FAKEAWAY COOKING!



BRASSHOUSE COMMUNITY CENTRE,
BRASSHOUSE LANE, SMETHWICK, B66-1BA
TUESDAY 1ST AUGUST
THURSDAY 3RD AUGUST
BOTH SESSIONS TAKE PLACE 10AM-12PM

COME ALONG AND CREATE YOUR OWN FAKE AWAY
MEAL.
ON OFFER WILL BE CHICKEN NUGGETS, PIZZA,
FRIES/WEDGES ALONG WITH SALAD.



CANOEING AT MALTHOUSE

MALTHOUSE STABLES, HURST
LANE, TIPTON DY4-9AB



TUESDAY 8TH AUGUST

TUESDAY 15TH AUGUST

BOTH SESSIONS TAKE PLACE 10AM-12PM

JOIN SPDC TEAM FOR A RELAXING CANOE
DOWN THE CANAL.

(AND MAYBE SPLASH A STAFF MEMBER OR 2)



COME SAILING WITH US!

MIDLAND SAILING CLUB, ICKNIELD
PORT RD, BIRMINGHAM B16-0AA
MONDAY 14TH AUGUST
8-11 YEARS 10AM-12PM
TIME TO PUT YOUR SAILING SKILLS TO THE TEST.
JOIN THE EXPERT INSTRUCTORS OF THE SAILING CLUB AND
THE SPDC TEAM TO ENJOY A SESSION ON THE WATER,
UNDER THE SAFE SUPERVISION OF EXPERT INSTRUCTORS
AND SPDC STAFF.
NO EXPERIENCE REQUIRED!





HORSE RIDING & GROOMING

SANDWELL VALLEY RIDING CENTRE, WIGMORE FARM, WIGMORE LANE, WEST BROMWICH, B71 3SU

THURSDAY 27TH JULY

TUESDAY 22ND AUGUST

WEDNESDAY 30TH AUGUST

THURSDAY 31ST AUGUST

ALL SESSIONS TAKE PLACE 1PM-3PM



ENJOY SPENDING TIME WITH THE STUNNING HORSES AT THE FARM, HAVE FUN TREKKING AND GET A TASTE OF HOW TO CARE FOR THESE LOVELY ANIMALS.

FAKEAWAY COOKING!

BRASSHOUSE COMMUNITY CENTRE, BRASSHOUSE LANE, SMETHWICK, B66-1BA

TUESDAY 1ST AUGUST

THURSDAY 3RD AUGUST

BOTH SESSIONS TAKE PLACE 1PM-3PM

COME ALONG AND CREATE YOUR OWN FAKE AWAY MEAL.



ON OFFER WILL BE CHICKEN NUGGETS, PIZZA, FRIES/WEDGES ALONG WITH SALAD.



CANOEING AT MALTHOUSE

MALTHOUSE STABLES, HURST LANE, TIPTON DY4-9AB

TUESDAY 8TH AUGUST

TUESDAY 15TH AUGUST

BOTH SESSIONS TAKE PLACE 1PM-3PM

JOIN SPDC TEAM FOR A RELAXING CANOE DOWN THE CANAL.

(AND MAYBE SPLASH A STAFF MEMBER OR 2)



COME SAILING WITH US!

MIDLAND SAILING CLUB, ICKNIELD PORT RD, BIRMINGHAM B16-0AA

MONDAY 14TH AUGUST

11-18 YEARS 1PM-3PM

TIME TO PUT YOUR SAILING SKILLS TO THE TEST. JOIN THE EXPERT INSTRUCTORS OF THE SAILING CLUB AND THE SPDC TEAM TO ENJOY A SESSION ON THE WATER, UNDER THE SAFE SUPERVISION OF EXPERT INSTRUCTORS AND SPDC STAFF.



FULLY WHEELCHAIR ACCESSIBLE



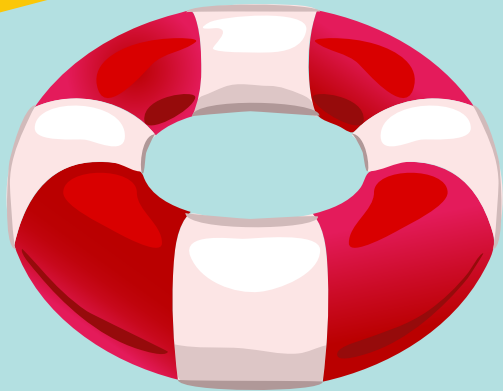
CALL TO DISCUSS ACCESSIBILITY



INACCESSIBLE FOR WHEELCHAIRS

Family Activities

ALL FAMILY MEMBERS
WELCOME



HYDRO SESSION

FOR FAMILIES WHO HAVE CHILDREN WITH PMLD OR COMPLEX NEEDS

PORTWAY LIFESTYLE CENTRE, NEWBURY LANE, OLDBURY

JOIN THE TEAM FOR A THERAPEUTIC EXPERIENCE FOR
FAMILIES WHO ARE UNABLE TO ACCESS MAINSTREAM
SESSION

WEDNESDAY 26TH JULY 10-10.45AM

WEDNESDAY 2ND AUGUST 10-10.45AM & 1-1.45PM

WEDNESDAY 9TH AUGUST 10-10.45AM

WEDNESDAY 16TH AUGUST 10-10.45AM

WEDNESDAY 23RD AUGUST 10-10.45AM

WEDNESDAY 30TH AUGUST 10-10.45AM



THE FLYING BAZAZI BROTHERS MONDAY 7TH AUGUST

12PM-2.30PM

THE OAK HOUSE, OAK ROAD, WEST BROMWICH B70 8HJ

AN EXCITING OUTDOOR PERFORMANCE BY
'THE FLYING BAZAZI BROTHERS' BRINGING THEIR OWN UNIQUE
CIRCUS SKILLS AND OFFERING TWO BESPOKE WORKSHOPS.
LEARNING HOW TO JUGGLE, PLATE SPIN AND DIABOLO!

SNACKS AND DRINKS AVAILABLE TO PURCHASE BUT WHY NOT
BRING ALONG A PICNIC AND MAKE USE OF THE PLAY AREA!



20TH BIRTHDAY CELEBRATIONS!

THURSDAY 10TH AUGUST

6PM-8PM

FORGE MILL FARM, FORGE LANE, WEST BROMWICH
B71-3SZ

YOU ARE INVITED TO SPDC'S 20TH BIRTHDAY BASH!
ENJOY AN EVENING OF STEEL BAND MUSIC, BBQ, ACCESS TO
THE SUNFLOWERS AND FARM.

THERE WILL ALSO BE A CHANCE TO BROWSE VARIOUS
FUNDRAISING STALLS.



HAPPY BIRTHDAY

Family Activities

ALL FAMILY MEMBERS
WELCOME



DAYTRIP TO THE SEASIDE

FRIDAY 18TH AUGUST

8.30AM COACHES WILL LEAVE PROMPTLY

MEETING AT GALTON VALLEY CHILDRENS CENTRE, GREAT
ARTHUR STREET, SMETHWICK, B66 1DH

PACK UP YOUR BUCKET AND SPADE AND JOIN US FOR OUR ANNUAL
DAYTRIP!

THIS YEAR WE ARE OFF TO WESTON SUPER MARE.
MAKE SANDCASTLES, ENJOY AN ICE-CREAM BUT ABOVE ALL ENJOY
SPENDING TIME TOGETHER!

COACH LEAVING WESTON AT 5.00PM PROMPTLY.

£3 PER PERSON (PAYABLE UPON CONFIRMATION)



FAMILY WATER SPORTS

FRIDAY 25TH AUGUST

10-12PM OR 1-3PM

SNEYD WATER ACTIVITIES CENTRE, VERNON WAY, WALSALL
WS3-2PA

JOIN THE TEAM FOR FUN ON THE WATER!
ACTIVITIES AVAILABLE ARE RAFT BUILDING AND PADDLE BOARDING.

PLEASE STATE A TIME PREFERENCE ON BOOKING (BUT CAN NOT
BE GUARANTEED).



CONTACT US



IF YOU WANT MORE INFORMATION ABOUT ACTIVITIES
CONTACT US!

SANDWELL PARENTS FOR DISABLED CHILDREN
GALTON VALLEY CHILDREN'S CENTRE
GREAT ARTHUR STREET
SMETHWICK

B66 1DH

TEL 0121 565 2410

EMAIL INFO@SP-DC.ORG

CHARITY REG NO 1125576



 **Sandwell**
Children's Trust